



NEWSLETTER

Issue 6, Wednesday, 27 July 2011



Always on the bright side

For Bangladesh contestant, Bristy Sikder, the result of the competition was not a big matter. What is more meaningful is the experience she has earned and the chance to make new friends.

"It was a nice feeling to compete with people who are the best. Besides, it's a good opportunity to make new friends from all over the world," she said.



Bristy Sikder

Outspoken and cheerful Bristy studied computer science because she enjoyed the feeling of achievement that she solved something.

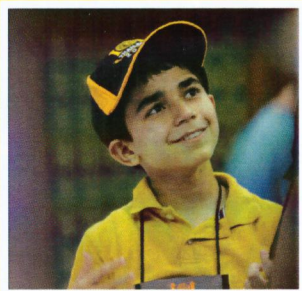
It was her engineer father who talked her into the science. He has been lending her big support all along.

"My dad always told me that just because other girls don't do it doesn't mean I can't do it. He told me to do whatever I want and not to think I am

different from the guys," she smiled whenever she talked about her father.

As first-time IOI competitor, Bristy was humble towards her goal.

"Many contestants here have been working hard for two to three years while I've only been practicing it for a month. If they expect a medal, I should expect something less than that," she chuckled.



Youngest and Bright

Eduard Grigoryan, 13, from Armenia
"The tests were fine.... I'm ok."

Day 6: WEDNESDAY 27 July 2011

(Excursion Day)

Time	Contestants	Leaders	Visitors
06.00 - 07.00	Breakfast (Supper Club: RCB)	Breakfast (Seafood Restaurant: RCG)	
07.00 - 08.00			
08.00 - 09.00	Ancient City Samuthprakarn	The Grand Palace, Wat Phrakaeo & Vimanmek Mansion, Bangkok	
09.00 - 10.00			
10.00 - 15.00			
15.00 - 18.00			
18.00 - 22.00	Dinner (Panorama & Supper Club: RCB)	Dinner at The Royal Thai Naval Dockyard Hall	

Out and About

Shopping experience at the
**Central Festival mall
in Central Pattaya**

On Wednesday July the 28th
from 10.00-14.00

Please meet at the Grand Hotel's
lobby at 10.00 am.

For IOI visitors only.



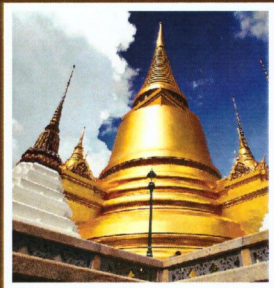
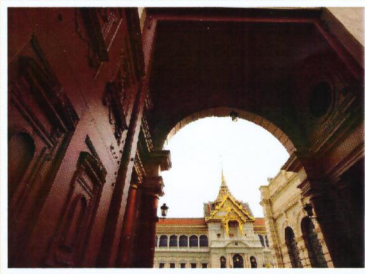
Weather Today



High Low
31 °C 24 °C

Trips to Thai Heritage

“ The Grand Palace and Wat Phra Kaeo ”



Wat Phra Kaeo

This large and famous complex, located near Sanam Luang in Bangkok, is a must for all tourists. It is 154 km from Pattaya. Getting there takes about two hours.

The Grand Palace and Wat Phra Kaeo (the Temple of the Emerald Buddha) were built after King Rama I founded the Chakri Dynasty and established Bangkok as the capital in 1782.

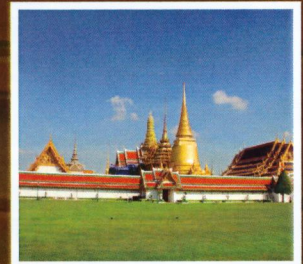
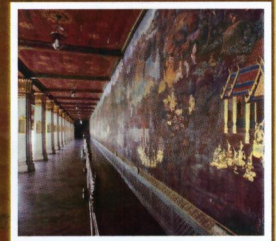
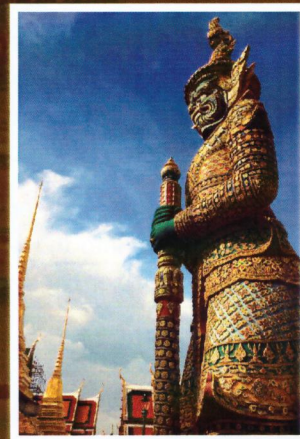
The Grand Palace consists of several buildings with different architectural styles; for instance, the Chakri Maha Prasat and the French-inspired Boromphiman Hall.



Wat Phra Kaeo is housing the Emerald Buddha, the country's most highly-revered Buddha image, carved from a single block of fine jade.

The inside walls of the temple's compound feature the longest wall painting in the world, depicting scenes from the "Ramayana" epic.

On the trip, you will also get a chance to visit Wat Arun (Temple of Dawn) and the world's largest golden teakwood mansion, the Vimarnmek Palace.



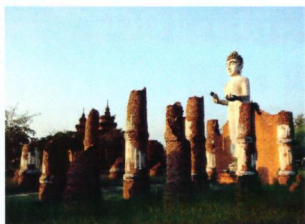
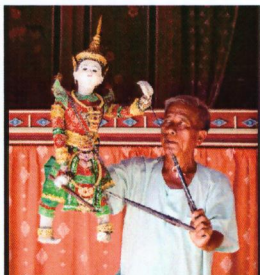
“ The Ancient City ”

If you have just a day to travel around Thailand, you might consider visiting the Ancient City (Muang Boran), a gateway to Thai heritage and wisdom.

Located in Samut Prakan, the neighborhood of Bangkok, the 320 landscape features a wide range of historic and architectural structures, fine arts, craftsmanship, which will bring you back in time to the Siam past.

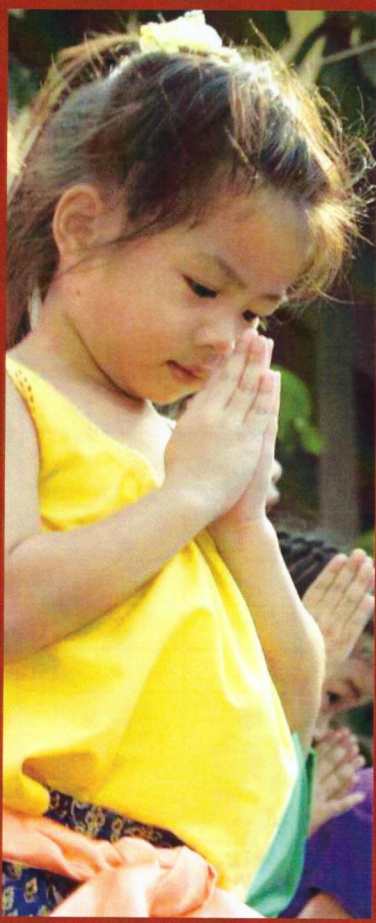
The Ancient City restores the splendors of Siam in forms of replicas. More than 100 monuments: palaces, Hindu's shrines, Buddhist's temples, traditional Thai houses, for example, are constructed here at a reduced scale; however, big enough for you to actually go inside, or climb onto the structures.

The trip from the hotel to the Ancient City is around two hours depending on the traffic.



Note: Bring your umbrella, rain coat, and scarf of your group.

Doing it the Thai Way



“Sawasdee” with a wai

When greeting or leaving, Thais will say “*Sawasdee*” along with “*wai*”. Wai is a gesture which shows politeness, respect, honor, and friendship; it can also be used in articulating apology or gratitude.

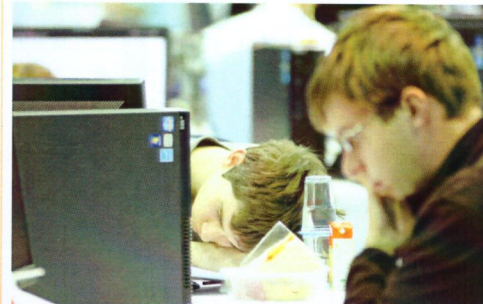
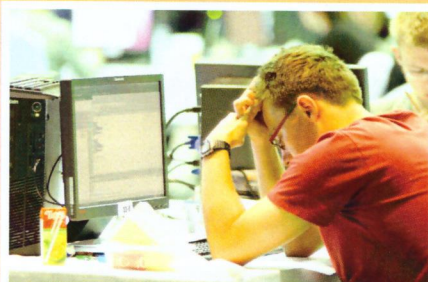
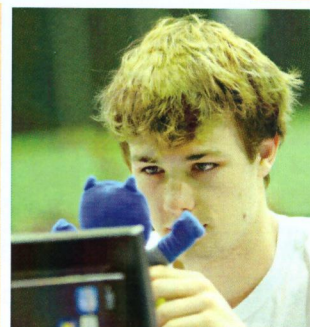
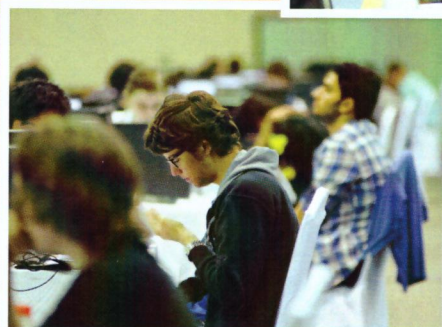
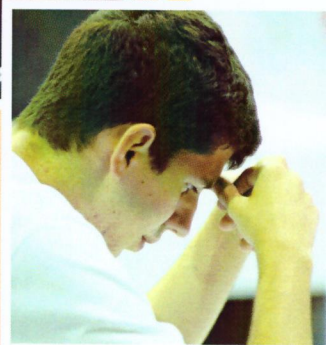
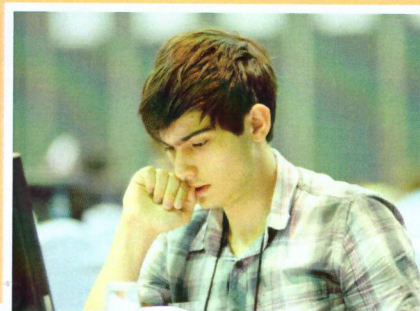
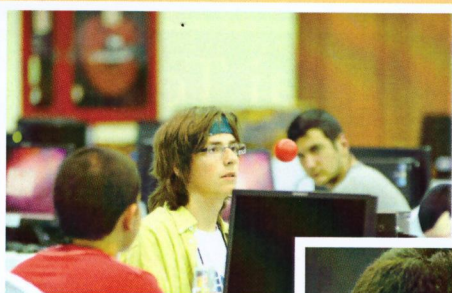
How to wai? Put your palms together and raise them to your chest. Keep your elbows close to your body. Bow your head. When you wai a senior person, bow your head until your forehead touches your index fingers. When someone wai you, it is customary to return the wai.

Etiquettes in the temple

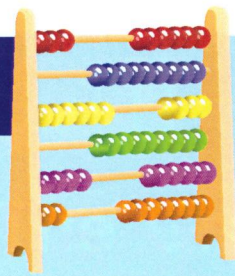
- Dress appropriately. Shorts are a no–no while skirts should be longer than knee length. Sleeveless–shirts or tank tops are not allowed. Sandals without ankle or heel straps are also prohibited. Sarongs are on loan for those sporting shorts.
- Remove shoes when entering Buddhists edifices.
- Sit with feet pointing away from Buddha statues. Pointing your feet at anyone is very disrespectful.
- Women should never touch monks. If a monk is walking towards you, politely step to one side.



Moments



Kuromasu



Kuromasu is played on a rectangular grid. Some of these cells have numbers in them. Each cell may be either black or white. The objective is to determine what type each cell is.

The following rules determine which cells are which:

- Each number on the board represents the number of white cells that can be seen from that cell, including itself. A cell can be seen from another cell if they are in the same row or column, and there are no black cells between them in that row or column.
- Numbered cells may not be black.
- No two black cells may be horizontally or vertically adjacent.
- All the white cells must be connected horizontally or vertically.

						3			
	3								
3		3				4			
		4		6		3		4	
					3				
4									
	4				3		3		3
		4				2		3	
			3						

		(9)						(8)	
								(7)	
				(12)					(16)
(9)									
	(10)								
		(12)		(8)		(11)		(3)	
									(3)
									(3)
(7)						(2)			
		(7)							
		(2)						(5)	

Solution next issue. ▶▶▶▶

Solution



Hitori

	8		6	3	2		7
3	6	7	2	1		5	4
	3	4		2	8	6	1
4	1		5	7		3	
7		3		8	5	1	2
	5	6	7		1	8	
6		2	3	5	4	7	8
8	7	1	4		3		6

2		3		1		7		4	12	10
1	4	5	2	3	12	8	7		11	9
10		11	8	6	3	9		2	5	4
8	3	7		4		11	1		9	2
	9	12	10		11	3		8		6
11		1		12	8		4	3	7	9
7	5		11	2	1	10	3		6	8
12		6	1		10	2		7	8	11
3	11		9	10		12	2	5		1
4	6	2		11	7		8		10	3
	8		4	5	6	1		10	3	7
9	1	10	6		5		11	12	4	

Credit: <http://www.menneske.no/hitori/2x12/eng/>

Thai Tongue



Ron Hot



Yen Cold

Phon Rain

Maak Very much

